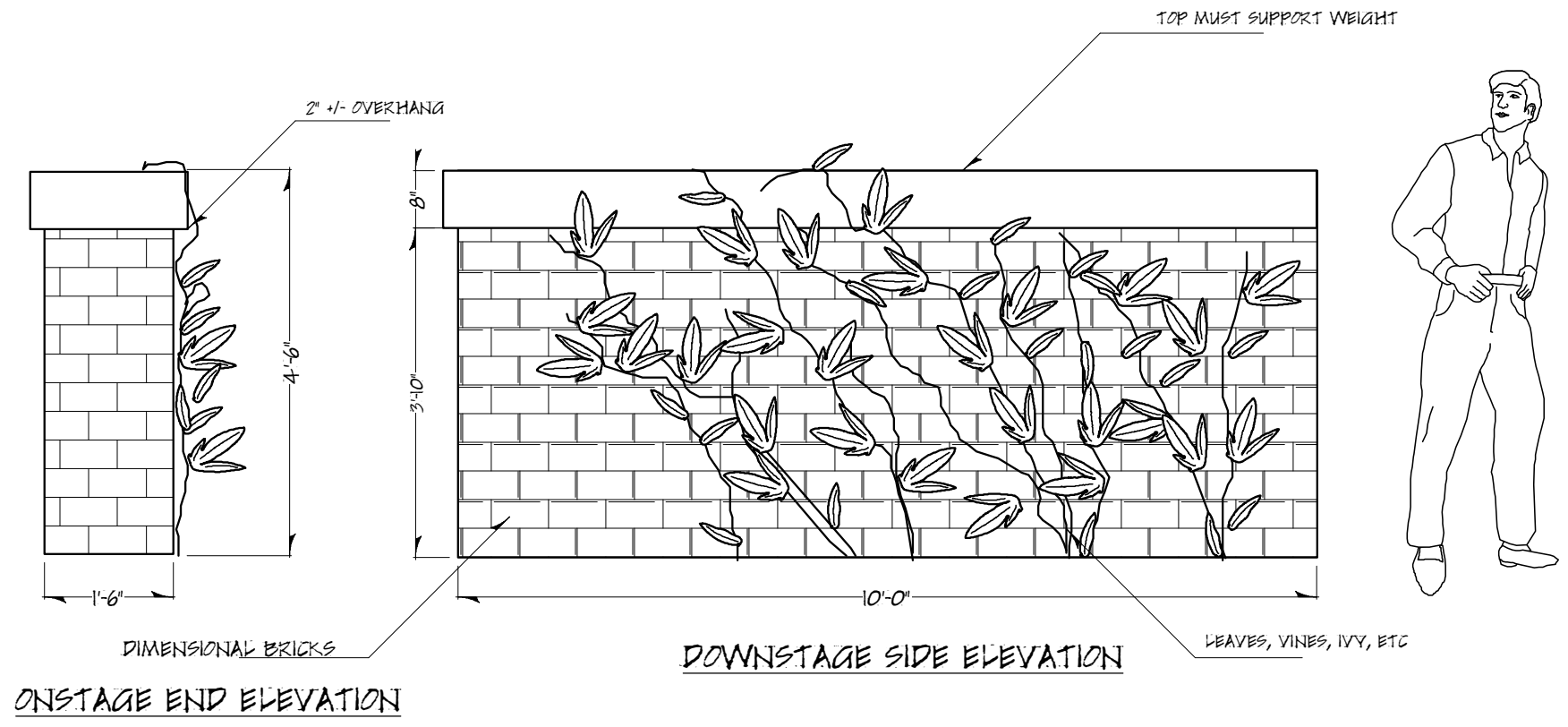


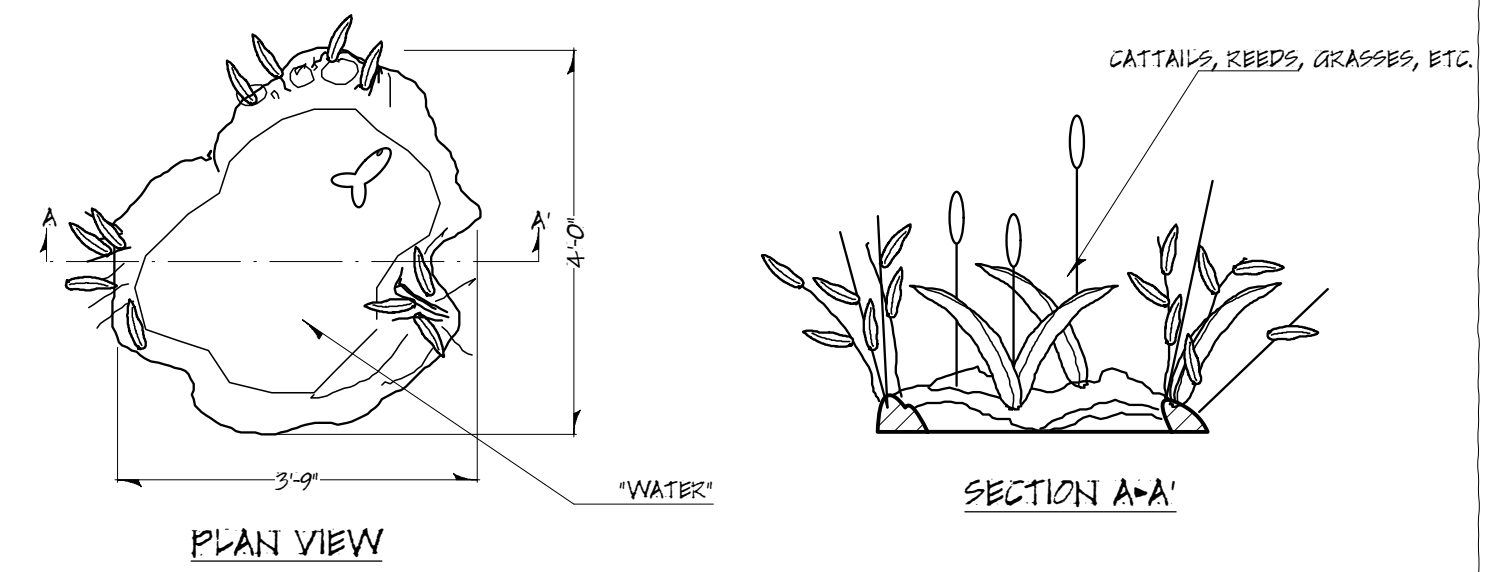
design by gregg hillmar  
 804.683.2503, gregg@hillmar-design.com  
 www.hillmar-design.com  
 © gregg hillmar 2005

# Velveteen Rabbit

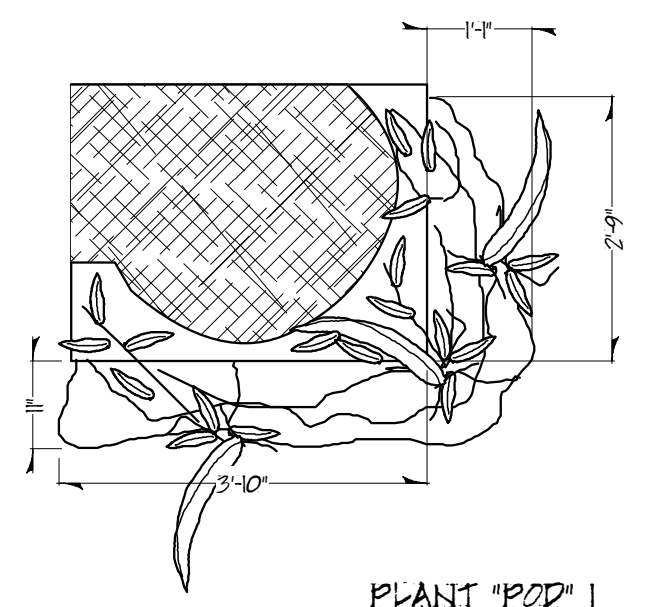
|  |  |  |
|--|--|--|
|  |  |  |
|  |  |  |
|  |  |  |
|  |  |  |
|  |  |  |



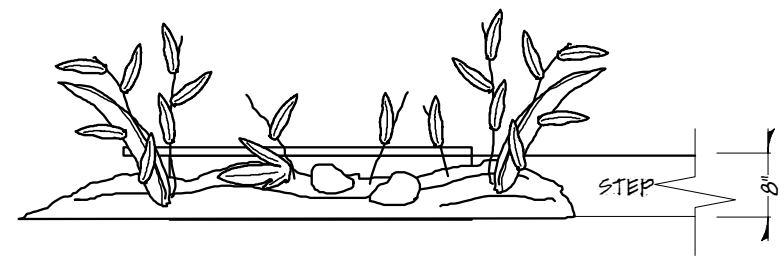
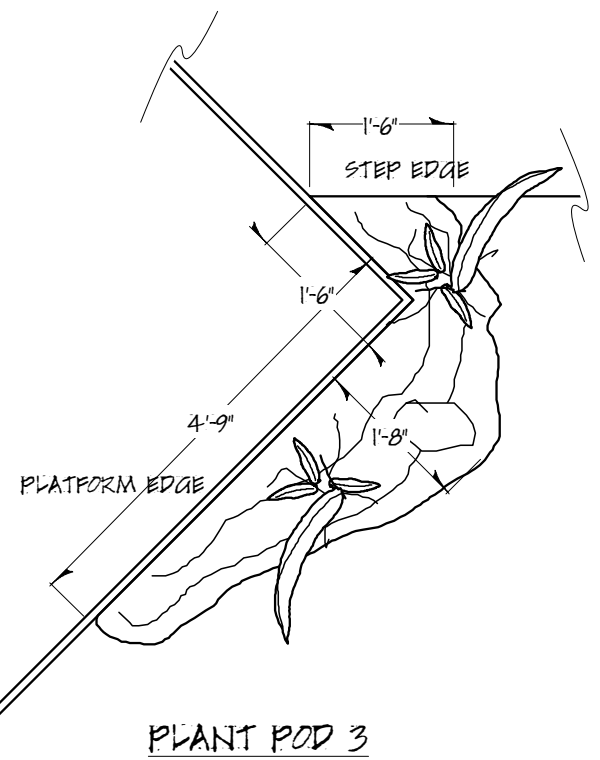
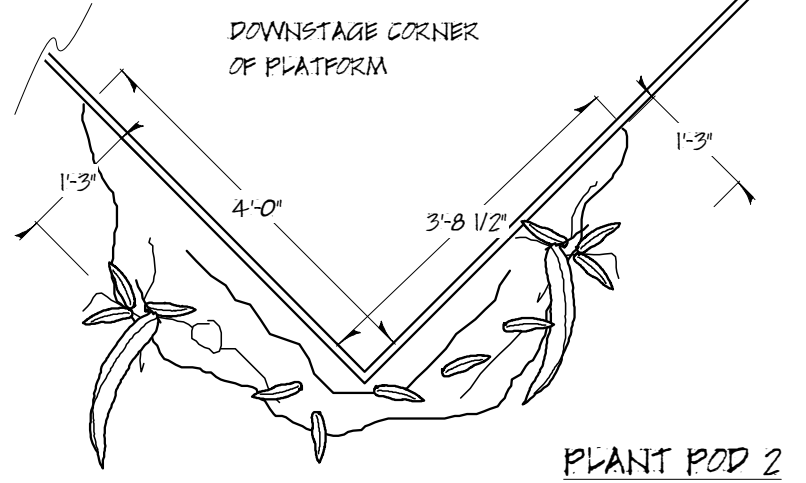
**GARDEN WALL**  
 PRE-EXISTING, BUT MUST SUPPORT WEIGHT  
 PUPPETEERS WORK FROM BEHIND- FRAME FOR SUPPORT, BUT NO COVER



**"POND"**  
 DIRECTOR DESIRES REAL WATER!  
 -USE POOL LINER OR EQUAL TO CONTAIN WATER  
 -DIRT OF SPRAYFOAM W/ EMBEDDED ROCKS, MOSS, OTHER VEGETATION  
 -PROVIDE ONE GOLDFISH...



BUILD UP AROUND SR PROSCENIUM COLUMN  
 USE SOME HIGH REEDS, BRACKEN, IVY



-TYPICAL OF ALL PODS  
 -DIRT OF SPRAYFOAM W/ EMBEDDED ROCKS, MOSS, GRASS, IVY, REEDS, ETC.